

Issue 2
June
2014

Gateway

SPOTSWOOD COLLEGE



at Spotswood College

What's Happening ?

We have placed 88 students since the beginning of the year and there are still some eager students ready for the experience of a day each week in the work force.

CONGRATULATIONS



Bree Paton-Courtney and Shardae McGovern competed in the Taranaki Hospitality Competition at WITT on June 16th. They won gold medals in the City & Guilds Secondary School Team Challenge and will travel to Auckland in September to compete in the finals.

A great team effort from Bree and Shardae and Hospitality teacher Simon Houghton, whose expertise and training was invaluable.

Two of our students—Xavi Clarkson and Chino Reihana have just begun a Gateway placement at Pukekura Park, where they will work in the fernery and around the park gardens. Both of these are very keen Horticulture students and are looking forward to this experience.

Our grateful thanks to the team at Pukekura Park for accommodating our students.

WITT COURSES



We have students attending Welding and Barista courses at WITT this term. These courses compliment the students Gateway placements and enable them to learn extra workplace skills in a different environment .

YMCA

In partnership with Careerforce, the New Plymouth YMCA Education Department offer the National Certificate in Youth Work (Youth Leadership) Level 3 qualification. We have three Year 13 students who are studying and working hard towards this. Misty Nikora, Rebekah Hurley and Dominique Goldsworthy are all focussed on a career in this field.

RED SHIRTS RETAIL PROGRAMME



Service IQ and The Warehouse have partnered to offer students a ten week Gateway Placement in Retail. Students are supported by a Retail coordinator and work on the Customer Service Award . We have six students who are in their third week of the programme. Each week they are assigned to a different staff member in a different area of the store in New Plymouth.

Sam Leathem, Jennifer Goodall, Meretita Baiteke, Jeremy Martin-Dromgool, Shay Broadfoot and Slayde Stevenson are all enjoying the experience and gaining many new skills every week.

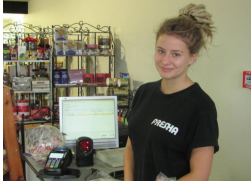
*Ina kei te mohio ko wai koe
I anga mai ki hea
kei te mohio koe
kei te anga atu ku hea*

*If you know who you are
If you know where you are from
then you will know
where you are going*

Spotswood College would like to thank all those employers who are helping to make the programme a success. Without their positive response the programme would not be so successful.

Extracts from Student Profiles

At Fresha Food Store I serve customers and tell them about different foods we have. I stock the shelves and I create displays. I've learnt how to open the shop in the morning and prepare it for the day and how to enter new stock in the system. I love learning new things about food and cooking.



**Kate
Fresha**

At Puke Ariki I do different tasks each week. I return books to shelves after they have been returned to the library. I tidy and keep everything in order. I deal with requests for books that have been miss-shelved. I enjoy the work and the people.



**Ben
Puke Ariki**

I assist the Beauty Therapist Tracey by taking phone calls and booking appointments. With supervision I assist with make-up, manicure, pedicures, tinting and spray tanning. I attend the Beauty Trade Academy at WITT.



**Haley
Complete
Radiance**

I really enjoy the practical work and range of tasks at Autocity. There is a lot of preparation work involved before painting vehicles. I am working on Automotive units and look forward to a career working this industry.



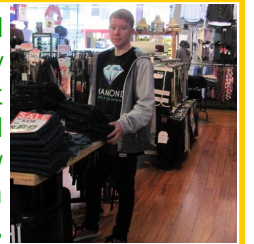
**Zak
Autocity Panel
& Paint**

I am very fortunate to be able to have this experience and gain so much knowledge of the travel industry at The House Of Travel. I am working on Level 3 Travel & Tourism units at school as well.



**Teodora
House Of
Travel**

I look forward to going to my placement each week. I unpack new stock, attach security tags, price and place in the store. I deal with customer enquiries and I am gaining new customer service skills.



**Aaron
North Beach**

I have a passion for Animal Care so I really enjoy my placements at Pet Essentials and the SPCA. I clean the animal cages, pack meat and stock shelves. I am also working on Animal Care units at school. I would like a future working with animals.



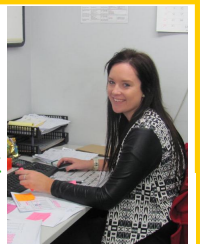
**Brienne
Pet
Essentials**

At Steelfab I do heavy and light fabrication which involves grinding and Mig, Tig and Stick welding. I also work on a range of machinery. I really enjoy going to Steelfab and have learnt so many new skills from experiencing what goes on in a workshop.



**Zak
Steelfab**

At EHL I am involved in Admin. I do data entry, create job cards, find and print invoices and also answer the phone. I really enjoy working with the friendly, helpful people in the office. This experience has helped me in my future career goals.



**Maressa
EHL Group**

**Beverley McLean
HOD Transition/Gateway/STAR
0272446517**

Gateway Office 06 7514690

**Kim Leathem
Gateway/STAR Assistant
0273270504**